



JCMB Provides Crew Calendar with Upcoming JOBS 3.1 Release

JCMB has developed **JOBS Crew Calendar** to help utilities with their field crew scheduling efforts. This new module addresses workforce scheduling and management issues faced by utility companies; we offer a simple approach to a complex task.

What is JOBS Crew Calendar?

JOBS Crew Calendar is a software module that works hand-in-hand with **JOBS** — JCMB's real-time field crew dispatch application. **JOBS Crew Calendar** automates the entire scheduling process. It provides users with a global view of each crew member's workload; making it easier to reschedule tasks/resources as well as optimize crew members' time.

What can you do with JOBS Crew Calendar?

JOBS Crew Calendar offers users the flexibility of viewing their field crew schedule in two different manners:

- Scheduler Mode (Normal or Expanded/Detailed view)
- Time Line Mode.

You may view the daily tasks that have been assigned to your field crews (including those that remain unassigned); or you may opt to view the tasks assigned over a period of several days, a week, or for an entire month.

You can also specify the duration period for each job type. Any scheduling modifications that you require can be made from within either the Scheduler or the Time Line Mode.

Figures A through C illustrate these different modes.



Figure A:- Scheduler Mode (Normal View)

The screenshot displays the XIOS Dispatcher - MIHAI Scheduler Mode (Normal View) interface. It features a menu bar (File, View, Job, JobType, Crew, Message, Help), a toolbar, and a main workspace divided into several panels:

- Calendar:** Shows a calendar for August and September 2003. The current date is August 31.
- Job List:** A table listing jobs with columns for Job Icon, Type, Job State, Promised Date, Creator, Crew, Order, and Assignment Icon. The list includes jobs like ADUT, CREL, EMER, EDT4, EDT5, E-CP, FLOI, GSEL, DNP, EDT3, FCAL, EMSET, EDT, EDT1, CTEMSET, DNP, and DSV.
- Schedule:** A grid view showing the schedule for each day from August 31 to October 11. It displays various icons representing different job types and their assignments.
- Tree View:** A sidebar showing a tree structure with nodes for Jobs, Job Types, Crews, Inbox, and Outbox.
- Map:** A map view at the bottom showing a grid of numbered cells (1-22) and a red line indicating a route or boundary. The map includes a toolbar with icons for GPS, GET, GPS, and other functions.

At the bottom of the window, it indicates "Memory used: 108.81 Mb".



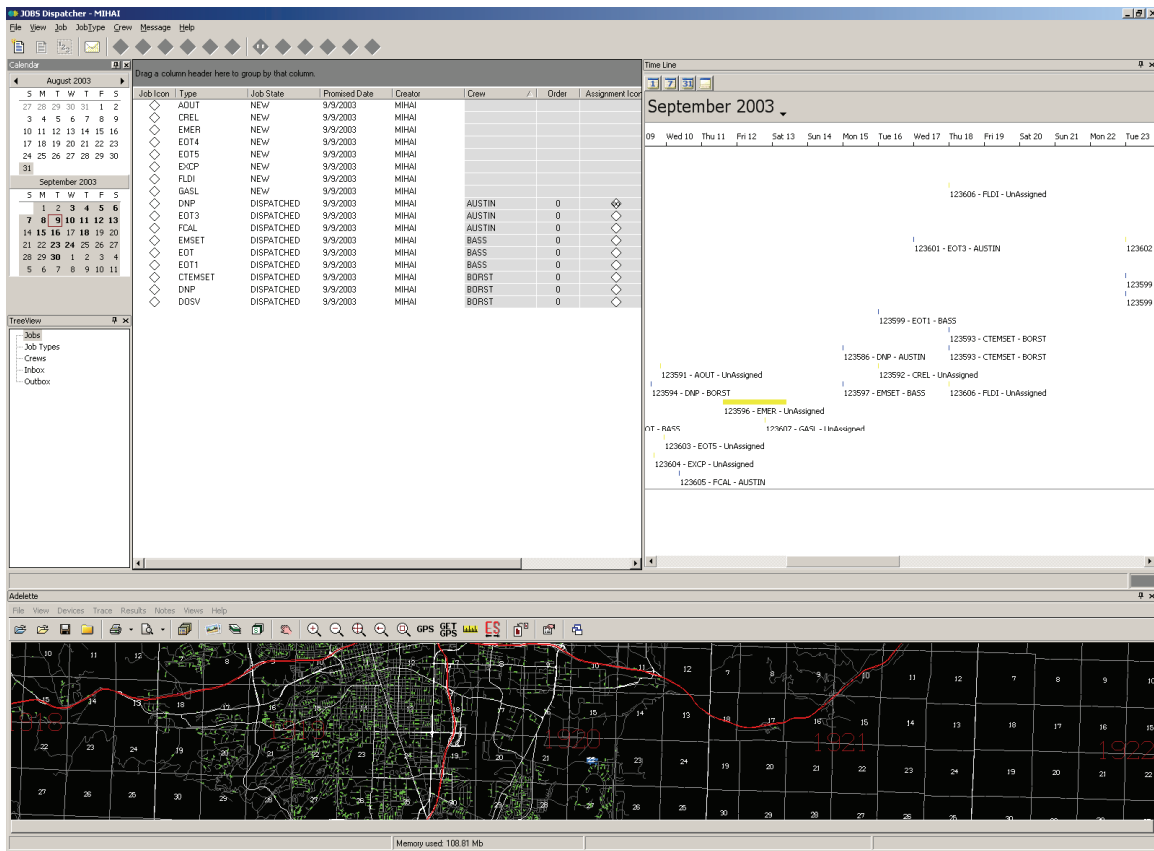
Figure B: - Scheduler Mode (Expanded/Detailed View)

The screenshot displays the 'JOBS Dispatcher - MIHAI' software interface. It features a menu bar (File, View, Job, JobType, Crew, Message, Help), a toolbar, and a main workspace divided into several sections:

- Calendar:** Shows a monthly view for August and September 2003, with the 8th of September highlighted.
- Job List Table:** A table with columns: Job Icon, Type, Job State, Promised Date, Creator, Crew, Order, and Assignment Icon. It lists various jobs such as ADUT, CREL, EMER, EOT4, EOT5, EXCP, FLDI, GASL, DNP, EOT3, FCAL, EMSET, EOT, EOT1, CTMSET, DNP, and DDSV.
- TreeView:** A sidebar showing a hierarchical view of 'Jobs', 'Job Types', 'Crews', 'Inbox', and 'Outbox'.
- Schedule View:** A detailed view for 'Tuesday, September 09, 2003' showing a 24-hour timeline. It displays job assignments as colored bars (yellow and blue) with specific time ranges and crew names (e.g., EOT - BASS, FCAL - AUSTIN, DNP - AUSTIN, BORST, GASL, EOTS, DNP - BORST, AOUT, EOT4, EOT1 - BASS, CREL).
- Map:** A map at the bottom showing a geographic area with a grid, roads, and a red line indicating a route or location. The map includes a toolbar with icons for navigation and a status bar at the bottom indicating 'Memory used: 108.81 Mb'.



Figure C:- Time Line Mode



In order to facilitate the retrieval of scheduling information, users can assign a different color to distinguish the following information:

- Crew Members (each one can be assigned a specific color).
- Crew Groups (such as Troublemens, Servicemen, Inspectors).
- Job types (such as turnoffs, disconnects, collections, meter readings and installs)

What are the benefits of JOBS Crew Calendar?

- Reduced response time, per job.
- Efficiency in scheduling and planning future jobs.
- Maximize field crew productivity.
- Increased customer satisfaction.

Recommended Hardware and Software Configuration



- Minimum PIII – 733 MHZ, 128 MB of RAM, 20 MB of free hard disk, .NET Framework
- Adelette™ v1.5
- JOBS v 3.1

For additional information, please contact:

Frank Fata
Director, Operations Solutions
[JCMB Technology Inc.](#)
450-632-5844 ext 228